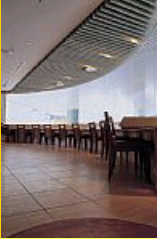




# PQHY-P200YHM-A

WY Series 8hp Water Cooled Condensing Unit

R410A Heat Pump



Pictures not to scale

## Product Details

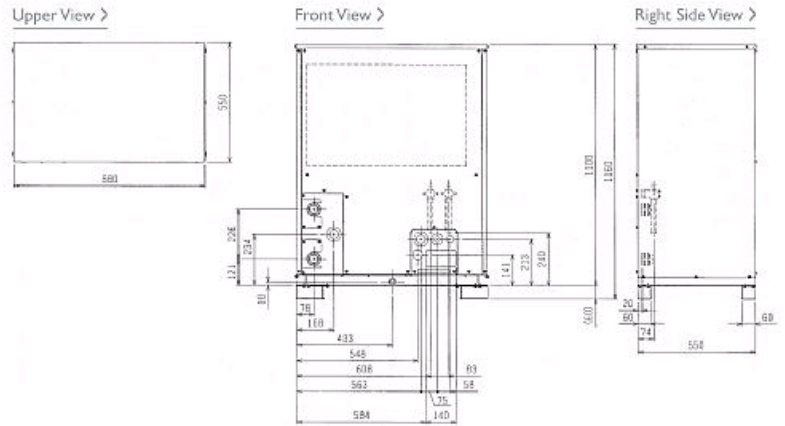
PQHY-P200YHM-A	
Capacity (kW):	
Heating (Nominal)	25.0
Cooling (Nominal)	22.4
Power Input (kW) Heating (Nominal)	4.12
Power Input (kW) Cooling (Nominal)	3.92
Max No. of Connectable Indoor Units	17
Noise (dBA)	47
Width - mm	880
Depth - mm	550
Height - mm	1160
Weight - kg	186
Electrical Supply	380-415v, 50Hz
Phase	3
Mains Cable No. Cores	4 + earth
Starting Current (A)	8
Running Current (A) - Heating	6.3
Running Current (A) - Cooling	6
Fuse Rating (BS88) - HRC (A)	20

### Piping Restrictions

Total Piping Length (m)	300
Furthest Piping Length (m)	165
Furthest Piping Length after 1st Branch (m)	40
Between Indoor and Outdoor Units - Height (m)	50
Between Indoor and Indoor Units - Height (m)	15

## Dimensions

PQHY-P200YHM-A



Telephone: 01707 282880

Email: [air.conditioning@meuk.mee.com](mailto:air.conditioning@meuk.mee.com) Website: <http://www.mitsubishielectric.co.uk/aircon>

Mitsubishi Electric reserves the right to make any variation in technical specification to the equipment described, or to withdraw or replace products without prior notification or public announcement.

Tel:  
Fax:

